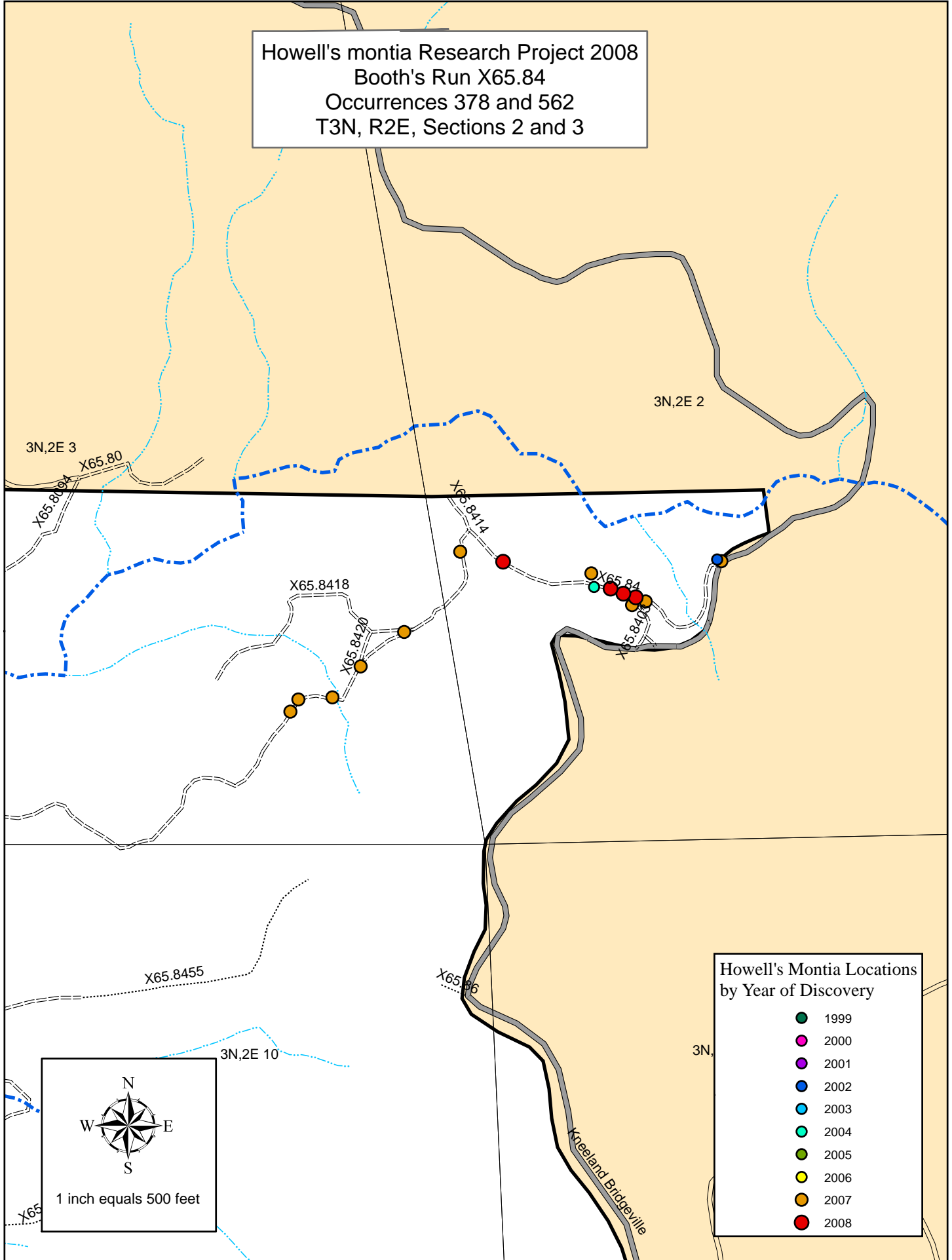


Howell's montia Research Project 2008
 Booth's Run X65.84
 Occurrences 378 and 562
 T3N, R2E, Sections 2 and 3



- Howell's Montia Locations by Year of Discovery
- 1999
 - 2000
 - 2001
 - 2002
 - 2003
 - 2004
 - 2005
 - 2006
 - 2007
 - 2008

1 inch equals 500 feet

3N,2E

3N,2E 2

3N,2E 3

3N,2E 10

Kreeland Bridgeville

X65.8418

X65.8420

X65.846

X65.8414

X65.84

X65.840

X65.8404

X65.8455

X65