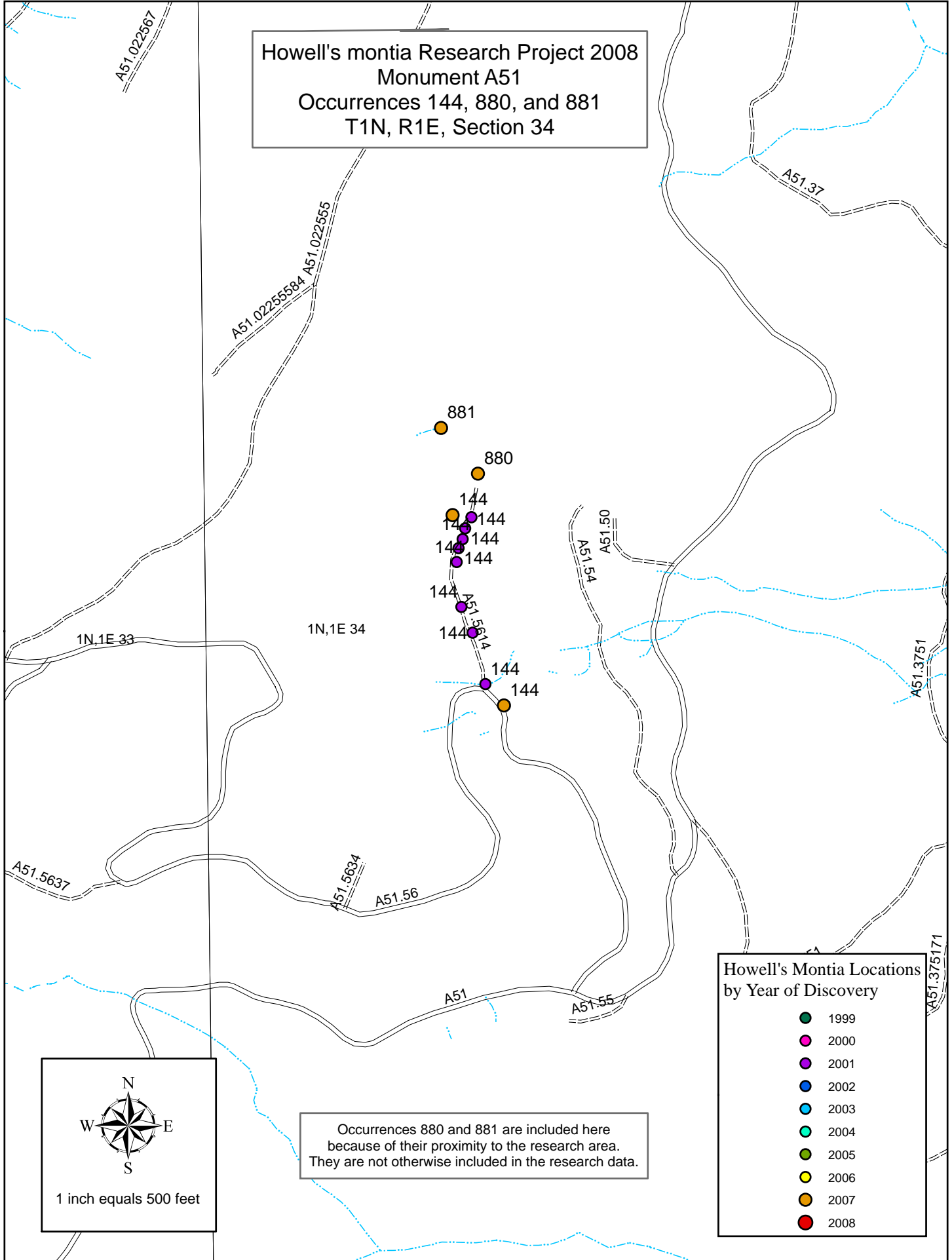


Howell's montia Research Project 2008
 Monument A51
 Occurrences 144, 880, and 881
 T1N, R1E, Section 34



- Howell's Montia Locations
by Year of Discovery**
- 1999
 - 2000
 - 2001
 - 2002
 - 2003
 - 2004
 - 2005
 - 2006
 - 2007
 - 2008

1 inch equals 500 feet

Occurrences 880 and 881 are included here because of their proximity to the research area. They are not otherwise included in the research data.