



Northern Spotted Owl Annual Report

2014

February 1, 2015



This page intentionally blank.

SIXTEENTH ANNUAL REPORT

**Submitted to the United States Fish and Wildlife Service, the California
Department of Fish and Wildlife, the NOAA Fisheries, and the California
Department of Forestry and Fire Protection**

By

Humboldt Redwood Company, LLC

**To fulfill the requirements of the Habitat Conservation Plan, 6.2, Northern
Spotted Owl Conservation Plan**

February 1, 2015

Reviewed:

Director, Forest Science

Original signed by:

Mike Miles

Project Managers/ Primary Authors

Brad S. Mauney

Brad Mauney

Sal Chinnici

Sal Chinnici

Project Description

Title: Northern Spotted Owl Annual Report 2014

Purpose: Northern spotted owl HCP monitoring

Date Initiated: March 1999

Projected End Date: Ongoing

Manager: Sal Chinnici, Forest Science Manager, and Brad Mauney, Lead Wildlife Biologist

Report Summary:

During the 2014 northern spotted owl survey season a total of 791 calling stations were used to conduct nighttime surveys of the sample quadrats and Timber Harvesting Plan surveys. A total of 849 daytime status and follow-up visits were conducted. All core sites and all activity sites within the sample quadrats were visited to determine occupancy, reproductive status, and reproductive success (if applicable).

Management objective 1 of the HCP, which requires the maintenance of a minimum of 108 activity sites in the HCP area, was met in 2014 with 136 total occupied activity sites including the 108 core sites. There are currently 215 total activity sites (occupied and unoccupied) on the property. Management objective 2, which calls for maintenance of spotted owl pairs on a five-year running average of 80% at core activity sites, was met in 2014 with a five-year running average of 82%. The pair occupancy rate for 2014 alone was 84% (91 of the 108 core sites were occupied by a pair of spotted owls). Management objective 3 requires the maintenance of a five-year running average reproductive rate of at least 0.61 fledged young per pair for the core sites (for those pairs monitored to determine reproductive output). Nesting activity was verified for 33 of the 91 pairs (of the 108 core sites), and a total of 45 young were fledged, resulting in a reproductive rate of 0.49 in 2014. The five-year running average of the reproductive rate for the sixteenth year of the HCP is 0.42, below the requirements of management objective 3.

In February of 2014 HRC and the U.S. Fish and Wildlife Service completed a minor modification to the HCP that resulted in a timing requirement for THP surveys and an adaptive

management requirement for occupancy and probability of detection analysis of HRC spotted owl surveys that will guide future survey methods.

Because the northern spotted owl was elevated to the status of a candidate for state listing, HRC requested and received a Consistency Determination from the California Department of Wildlife that the conservation measures of the HCP are consistent with the California Endangered Species Act.

HRC continues to have concerns about various threats to our spotted owl population, represented primarily by barred owls. The continuing invasion of barred owls has the potential to reduce or eliminate the HRC spotted owl population regardless of other effects.

We currently recommend continuing the same monitoring strategies for the 2015 season, with consideration given to a potential change in harvest operations surveys as a result of the occupancy and probability of detection analysis, to be determined prior to the start of the 2015 survey season on 1 March.

TABLE OF CONTENTS

EXECUTIVE SUMMARY 1

INTRODUCTION 2

STUDY AREA AND METHODS 5

 Monitoring, Timber Harvesting Plan (THP), and Site Preparation Surveys 5

 Monitoring Surveys6

 Timber Harvesting Plan (THP) Surveys7

 Site Preparation Surveys9

 Activity Site Determination 9

RESULTS AND DISCUSSION 9

 Barred Owls 10

 West Nile Virus (WNV) 13

 Sudden Oak Death (SOD)..... 14

 Follow-up Visits..... 15

 Management Objectives 1 and 4..... 15

 Management Objective 2 17

 Management Objective 3 17

 Activity Site Levels of Protection..... 21

 Habitat Conditions23

 Banding Program 29

 Regional Trends 30

RECOMMENDATIONS 31

 Surveys..... 31

 Banding 32

 Barred Owls 32

 Scientific Panel/Management Objectives 32

PROJECT REPORT DISTRIBUTION LIST

Ms. Susan Sniado
California Department of Fish & Wildlife
Northern California - North Coast Region
610 2nd Street
Eureka, CA 95501

Mr. James Bond
U.S. Fish and Wildlife Service
Arcata Fish and Wildlife Office
1655 Heindon Rd.
Arcata, CA 95521

Dr. Alan Franklin
USDA/APHIS
National Wildlife Research Center
4101 LaPorte Ave
Fort Collins, CO 80521-2154

Dr. Barry Noon
Colorado State University
Department of Fisheries & Wildlife Biology
Fort Collins, CO 80523

Dr. Steven Courtney
WEST, Inc.
735 State St. Suite 300
Santa Barbara, CA 93101

Mr. Matt Goldsworthy
NOAA Fisheries
1655 Heindon Road
Arcata, 95521

Ms. Leslie Markham
Cal Fire
135 Ridgeway Avenue
Santa Rosa, 95401

EXECUTIVE SUMMARY

The year 2014 was the sixteenth year of surveys and monitoring under the Northern Spotted Owl Conservation Plan (Habitat Conservation Plan or HCP §6.2) of the former Pacific Lumber Company (PALCO), now Humboldt Redwood Company (HRC) HCP. The intent of this report is to briefly summarize the methods, results, and management objectives of this conservation plan. As with previous reports, relevant appendices have been copied to a CD along with this report.

During the 2014 survey season we continued to rely upon the changes in survey methods resulting from the HCP minor modifications of 2002. Monitoring surveys were accomplished using 394 calling stations to cover all potential spotted owl habitats within the 2014 sample quadrats. Overall, a total of 791 calling stations were used to conduct nighttime surveys of the quadrats and Timber Harvesting Plan (THP) surveys. Follow-up visits were conducted to the locale of night contacts to determine the status and location of the owls contacted. A total of 849 daytime status and follow-up visits were conducted. All core sites, and all activity sites within the sample quadrats, were visited to determine occupancy, reproductive status, and reproductive success (if applicable).

Management objective 1 of the HCP requires the maintenance of a minimum of 108 activity sites¹ in the HCP area over the life of the permit. There were 136 total occupied activity sites in 2014, including the 108 core sites. Therefore management objective 1 was met in 2014.

Management objective 2 calls for maintenance of spotted owl pairs on a five-year running average of 80% of the core activity sites in the HCP area. In 2014, 91 of the 108 cores sites were occupied by a pair of spotted owls, for a pair occupancy rate of 84% (0.843). The five-year running average for the occupancy rate by pairs is now 82% (0.819). Management objective 3 requires the maintenance of a five-year running average reproductive rate of at least 0.61 fledged young per pair for the core sites (for those pairs monitored to determine reproductive output). During the 2014 breeding season, 91 pairs (of the 108 core sites) were monitored for nesting activity and reproductive output. Nesting activity was verified for 33 of the 91 pairs. A total of 45 young were fledged, resulting in a reproductive rate of 0.49. The five-year running average of

¹ **Activity site** (or activity center) is the area surrounding and including the nest tree or primary roost tree of a pair of spotted owls or single spotted owl, and where they are consistently located.

the reproductive rate for the sixteenth year of the HCP was 0.42; therefore it does not meet the requirements of management objective 3.

In February of 2014 HRC and the U.S. Fish and Wildlife Service (Service) completed a minor modification to the HCP that resulted in an additional timing requirement for THP surveys and an adaptive management requirement for occupancy and probability of detection analysis of HRC spotted owl surveys that will guide future survey methods. Further detail is provided below.

Because the northern spotted owl was elevated to the status of a candidate for state listing, HRC requested and received a Consistency Determination from the California Department of Wildlife (Department) that the conservation measures of the HCP are consistent with the California Endangered Species Act.

HRC continues to have concerns about various threats to our spotted owl population, represented primarily by barred owls, but also including West Nile Virus, potential poisoning threats from illegal marijuana grows, and sudden oak death. Individually or in concert these stressors have the potential to reduce or eliminate the HRC spotted owl population or habitat regardless of HCP effects. At present, the actual effect of these threats on our population is unknown. We currently recommend continuing the same monitoring strategies for the 2015 season, with the exception of a potential change in THP survey requirements related to the occupancy and detection probability analysis.

INTRODUCTION

The purpose of this Northern Spotted Owl (spotted owl or NSO) sixteenth Annual Report is to present the results of surveys and analyses of management objectives for the northern spotted owl (*Strix occidentalis caurina*) on lands of the Humboldt Redwood Company, LLC (HRC) covered by the HRC Habitat Conservation Plan (HCP), U.S. Fish and Wildlife Service (USFWS, the Service) Permit TE828950-0.

The reporting period is from 1 January 2014 to 1 January 2015, and covers surveys conducted from March to August 2014. The year 2014 was the sixteenth year of surveys and monitoring

under the Northern Spotted Owl Conservation Plan (HCP §6.2). Regarding annual surveys, or censuses, HCP §6.2.2 # 2 states:

Monitoring data shall be provided annually to the NSOSRP (Northern Spotted Owl Scientific Review Panel), the USFWS, and CDFW (California Department of Fish and Wildlife, the Department).

As stated in HCP §6.2, the overall conservation strategy for spotted owls is a habitat-based approach that includes the harvest, retention, and recruitment of habitat and essential habitat elements at both the landscape and activity site levels. The strategy also includes measures for disturbance minimization, population monitoring, and adaptive management techniques.

During the sixteenth year of HCP implementation, the northern spotted owl program continues to follow the “quadrat” sampling approach and minor modifications approved in 2002 to monitor the “core” owl sites for occupancy and reproduction.

These minor modifications approved in 2002 consisted of three primary components: 1) clarification that the HCP’s spotted owl management objectives apply to the “core” (i.e., Level 1 and Level 2) owl sites, 2) modification of the census techniques to concentrate on sampling “quadrats” made up of watershed units on the covered lands, and 3) modification of survey methods for site preparation activities, recognizing that these activities are different in nature from timber harvesting relative to breeding season disturbance. These minor modifications to the HCP have been appended to previous reports, and are incorporated here by reference.

During a September 2003 meeting we also continued discussions with the USFWS and the CDFW regarding the evaluation for retention or removal of activity sites. These discussions eventually led to the development of a mutually agreed-upon survey methodology for removal of unoccupied sites from the list of activity sites.

In 2009 the Habitat Retention Area (HRA) strategy was fully implemented. The HRAs are intended to provide long-term nesting and roosting habitat around the *most productive* NSO activity centers. The USFWS, CDFW, and HRC reviewed habitat and other maps, aerial photography, and known NSO locations to identify HRAs for 80 Level 1 NSO activity centers. The HRAs were developed for activity centers that have a history of occupancy and reproduction. Because a proportion of these sites may be unoccupied in some years, the HRAs

are intended to continue to provide nesting and roosting habitat during these unoccupied years given the reasonably likely event they will be reoccupied over time. If a Level 1 HRA is unoccupied, a replacement Level 1 activity center is selected from other available sites meeting required criteria. There are currently thirteen unoccupied HRAs; consequently we are currently maintaining 93 Level One sites.

On December 27, 2013 the California Fish and Game Commission adopted the Department's findings that the listing of the northern spotted owl as a threatened or endangered species under the California Endangered Species Act (CESA) may be warranted, resulting in candidate status for the spotted owl during the status review period. Under CESA, a candidate species receives protection from "take" as if it were listed, until such time as a status review is conducted and a final listing determination is made.

HRC, the Service, and the Department discussed NSO management and monitoring in light of this change in status, and agreed to a HCP minor modification regarding THP surveys and HCP adaptive management. HRC agreed to conduct an occupancy and probability of detection analysis of our NSO survey data from 2003 – 2014 to achieve a better understanding of how many day and/or nighttime surveys are necessary to detect spotted owls, considering the presence of barred owls in the region. The analysis is expected to be completed prior to the 2015 survey season, and will be revisited every five years, or as needed.

Subsequently, because the northern spotted owl is a federally covered species under the HRC HCP, HRC applied for a Consistency Determination through the Department and received a concurrence letter on 20 February 2014. Both the HCP minor modification approval and Consistency Determination concurrence have been attached to this report in the appendices.

This brief introduction of the 2014 spotted owl program is expanded below. In particular, this report discusses: 1) the study area and methods used in the assessment of spotted owls within that study area, 2) results of the survey efforts, 3) the meaning of the results both biologically and with respect to the management objectives of the HCP, and 4) HRC's year 2015 action plan for the spotted owl conservation plan.

STUDY AREA AND METHODS

The HRC HCP covered lands currently encompass approximately 209,000 acres and are located in coastal Humboldt County in northern California (Map 1). The HCP area is characterized by mountainous terrain, a maritime climate, and dense coniferous forests, primarily dominated by the coast redwood (*Sequoia sempervirens*) and Douglas-fir (*Pseudotsuga menziesii*) forest-types.

In general, field survey methods for spotted owls are conducted following guidelines in the U.S. Fish and Wildlife Service protocol, “Protocol for Surveying Proposed Management Activities That May Impact Northern Spotted Owls” (USFWS 1992). During the 2011 survey season we began to incorporate changes proposed by the USFWS for northern spotted owl surveys in a revised protocol (2011 Northern Spotted Owl Survey Protocol, USFWS 2011a). For example, we used digitally recorded and amplified owl calls, and followed the typical 10 minutes of spotted owl calls with five minutes of barred owl (*Strix varia*) calls for a subset of surveys. Spotted owl and barred owl calls consisted of a mix of standard territorial calls (e.g. 4 and 5 note calls), contact hoots and whistles, and agitated calls digitally recorded and broadcast using Wildlife Technologies MA-15 electronic callers, or Fox Pro “Fury” or “Firestorm” electronic callers.

For all survey methods, when a spotted owl response is evoked during the nighttime surveys, presence, and if possible, status is determined with a follow-up daytime visit. Follow-up visits were conducted using daytime walk-ins of the habitat to attempt to locate nesting or roosting owls. Owl sites were checked to determine occupancy and nesting status. The surveyor walks in to a known site, or returns to the site of a survey contact, and uses voice calling and/or amplified calls to contact the spotted owls which may be nesting or roosting at the site. The suitable habitat in an area roughly 0.5 mile around the previous contact is used as a search area. When a single owl, or a pair of spotted owls, is contacted on the follow-up visit the surveyor offers prey items (domestic mice) in an attempt to establish breeding status.

MONITORING, TIMBER HARVESTING PLAN (THP), AND SITE PREPARATION SURVEYS

As discussed above, minor modifications to the HCP that were approved by the CDFW and USFWS in 2002 affected the survey methodology for monitoring, THP, and site preparation activities. For monitoring, or census purposes, a quadrat sampling design was implemented to

replace a complete census. THP survey methods were refined as a result of experience from the first three years of HCP implementation. In addition, surveys for site preparation activities were modified in recognition of the characteristics and duration of activities that are involved, and also of the potential for disturbance to spotted owls during the breeding season.

Monitoring Surveys

The Northern Spotted Owl Conservation Plan, HCP §6.2.2, # 2 reads:

PALCO shall conduct complete annual censuses to monitor all activity sites on the ownership and to determine numbers of pairs, nesting pairs, and reproductive rates. PALCO may use a sampling methodology, rather than a complete census, provided that the sampling proposal has been reviewed by the NSOSRP and approved by the USFWS and CDFW. Monitoring data shall be provided annually to the NSOSRP, the USFWS, and CDFW.

The USFWS, CDFW, NSOSRP, and PALCO had agreed that using a sampling methodology, rather than a complete census is likely to have several benefits for the population of spotted owls on HRC's covered lands as well as for HRC staff. Following agreement between PALCO, the USFWS, and the CDFW that the HCP management objectives (HCP §6.2.1) for pair occupancy and reproduction apply to the core sites as in HCP §6.2, Table 7, the objectives of a sampling methodology were therefore clarified. Thus, the objectives of sampling a subset of the covered lands each year via night surveys include:

- Tracking known sites within the quadrats surveyed,
- Finding new sites that may be used as part of the minimum level (core) sites,
- Inventorying sites related to management activities, and
- Tracking the number and location of sites within a given geographical area over time, to help provide information on the effects of management activities.

The quadrat approach relies on large hydrologic areas containing multiple owl territories as the basic sampling units (Map 1). The hydrologic units are based on significant watershed areas (e.g. Freshwater Creek, Elk River), using the dividing ridgelines as the boundaries between units. Where necessary to maximize sampling efficiency, hydrologic units were combined into logical units, resulting in a total of 20 quadrats. In other words, if a hydrologic unit on the periphery of the covered lands contained a relatively small portion of HRC covered property, then it was incorporated into an adjoining, logical unit. During the 2014 season, quadrats 18, 20, 13, and 3

were sampled (Lawrence Creek, Grizzly Creek, Lower Eel River, and Chadd Creek to Jordan Creek).

The basic methods and reporting requirements of the quadrat sampling approach are as follows:

1. Using USFWS night survey protocol techniques, conduct three survey visits of all suitable habitat in the four quadrats for that sample year.
2. Use daytime follow-up visits (again using USFWS techniques) to check occupancy and reproductive status of all known sites in the quadrat (including any core sites).
3. In addition to the visits in item # 2, use daytime follow-up visits to check occupancy and status of any sites contacted on the night surveys.
4. In addition to calculating the values of pair occupancy and reproductive rate for the management objectives of HCP §6.2.1 for the core sites, also calculate the results of the same values for all sites monitored in the quadrats. These combined data will be used to track pair occupancy and reproductive trends over time, and will be compared to information gathered on spotted owls at other study sites in northern California.
5. Prior to 1 June each year HRC shall report to the USFWS and the CDFW on the quantity and distribution of suitable spotted owl habitat in the quadrats and on the covered lands as a whole. This information will be used to help understand potential reasons why management objectives may not be met, and potential means of correction (e.g., HCP §6.2.3 # 6).
6. All survey and status visit results, as well as habitat information from item # 5, will be reported annually in the HCP Annual Report, due each year on 1 February.

Timber Harvesting Plan (THP) Surveys

The methods for surveying THPs in HCP §6.2.2 # 3 also underwent minor modification in 2002, as a result of discussions and agreement between the CDFW, USFWS and PALCO. Refinements in the THP surveys were primarily in the areas of timing of surveys, and clarification in

procedural language. The modifications have been included in previous reports and correspondence, and are incorporated here by reference.

Additions were made to the THP survey language in 2009, and again in 2012, to clarify the meaning of “continuous operations”, as follows:

- (a) *Note: HRC and the Wildlife Agencies agree that in this context, “maintained continuously” means that:*
- i) *Operations can only be shut down for a maximum of 5 consecutive days, including weekends,*
 - ii) *Only 3 of the 5 shut down days can be non-weather related,*
 - iii) *Operations must occur for 3 consecutive days between any consecutive 5 day shut down period, and*
 - iv) *During any consecutive fixed 10 day period beginning February 21 there must be at least 5 days of operations.*
 - v) *If item iii) is applied, there must be 5 consecutive days of operations following the 5-day shutdown, 3-day operations, 5-day shutdown event.*
- (b) *In this context hauling of logs or equipment does not constitute “continuing operations”.*

Most recently, the February 2014 HCP minor modification required a slight change in survey timing, and an adaptive management requirement for a survey analysis, with the results intended to guide future survey effort.

THP survey modification:

For new operations, except site preparation, initiated in the period beginning February 21 and ending on or before August 31, the THP area and a 1,000-foot buffer shall be surveyed. Three survey visits, each separated by at least one week, shall occur prior to the start of operations, but after March 1. At least one visit shall occur on or after April 1. Survey efforts may be modified pursuant to HCP Section 6.2.3, Item 8 within the constraints of a minimum of three visits, and a maximum of six visits range. (Minor modification added language is underlined).

Adaptive management addition:

8. *In 2014, and at five-year intervals thereafter, HRC shall conduct an analysis of spotted owl occupancy and detection probabilities using their accumulated survey data. The analysis shall include appropriate covariates for other factors that explain detectability. The Wildlife Agencies will review the appropriateness of the analysis methods. The results will be evaluated to determine the appropriate number of night and/or daytime survey visits necessary to maintain $\geq .90$ confidence interval, (e.g., $CI = 1 - (1 - p_{survey})^{n_{surveys}}$) to detect a spotted owl, if present, for new operations initiated in the period beginning February 21 and ending on or before August 31. Survey efforts will be modified accordingly to maintain this*

confidence interval, within the constraints of a minimum of three visits, and a maximum of six visits range. HRC, the Wildlife Agencies, and/or the NSOSRP will meet to review the results and determine modifications, if necessary.

Site Preparation Surveys

Site preparation activities, e.g. those activities undertaken following timber harvest and in preparation for reforestation of a site, typically have little potential for disturbance of breeding, and are of relatively short duration (the methods of surveying for spotted owls for these kinds of activities also were subject to minor modification during 2002). Again, the surveys as described in the modified HCP §6.2.2 # 3 have been appended to previous reports. There were no site preparation-specific surveys conducted in 2014.

ACTIVITY SITE DETERMINATION

As in past years under the HCP, occupancy and reproductive criteria used were consistent with those outlined by the USFWS protocol, along with guidance received from the USFWS and the CDFW. Further, in 2002 the CDFW, USFWS and PALCO discussed and agreed upon a method for determining the establishment and also possibly the location of activity centers based on audio contacts only, and in 2003 agreed upon standards for removal of unoccupied sites. These methods have been discussed and appended in previous reports.

Following a resolution meeting and discussion with the Department, Service and the HCP Monitors in the fall of 2013, Appendix D was modified to include additional information regarding unoccupied activity centers. Based on those discussions and using the guidance of the “Decision Tree”, the following sites have been identified as unoccupied and removed from the GIS layer for 2014:

Site 15 (Bell Lawrence Creek), Site 31 (Blanton Creek), Site 49 (Nanning Creek), Site 121 (Fish Creek), and Site 161 (Lawrence Creek).

RESULTS AND DISCUSSION

Monitoring surveys were accomplished using 394 calling stations to cover all potential spotted owl habitats within the 2014 sample quadrats. In comparison, during the 2013 season we used 476 calling stations to cover the habitat within the sample quadrats on HCP covered lands.

Overall, a total of 791 calling stations were used to conduct nighttime surveys of the quadrats and THP surveys.

Surveys in 2014 resulted in the equivalent of 2,425 nighttime survey visits, in comparison to 2,525 survey visits in 2013. Reasons for reduced overall night surveys in 2014 include: 1) THP areas were relatively consolidated within watershed areas, requiring fewer stations for coverage, and 2) there was more nesting activity, resulting in less night survey activity once nesting status had been confirmed.

BARRED OWLS

HRC has continued tracking detections of barred owls (*Strix varia*), as did the previous landowner, since the species began responding to spotted owl calls on surveys starting in about 1991. Mapping of the detections and nest sites illustrates: 1) greater activity to date in the northern areas of the ownership, as would be expected given the known movement of the barred owl invasion, 2) greater numbers of detections along riparian corridors, and 3) an indication of barred owl preference for the old growth MMCA and reserves (Map 2).

Given the evidence from Washington, Oregon, and other regions of California that barred owls can have a very significant impact on occupancy and breeding of spotted owls (Anthony et al. 2004, Courtney et al. 2004, USFWS 2008, USFWS 2011b), HRC remains concerned about the potential for barred owls to disrupt the management goals of the HCP for spotted owls. In fact, the Service has recognized that barred owls appear to be a greater threat to the recovery of spotted owls than was envisioned at the time of the spotted owl listing in 1990, and as a result has recommended immediate and coordinated action (USFWS 2008, USFWS 2011b).

Barred owl activity in the study area continues to indicate that there are established barred owl territories that are reproductively active. In 2014, there was a decrease in the total number of barred owl detections with 27 total detections, compared to 47 total detections in 2013 (Figure 1). One barred owl nesting attempt was confirmed in 2014. In contrast to previous years when we have detected barred owls in new areas, during the 2014 survey season barred owls were detected *only* in areas that have been previously occupied by barred owls.

Similar to the 2010-2013 seasons, we utilized electronic calling devices with recordings of both spotted owl and barred owl calls for 598 of the 2,425 monitoring surveys (~25%). Preliminary indications are that results of these integrated surveys may be promising in terms of eliciting both spotted and barred owl response when either or both species is present.

Since we began tracking the barred owl invasion, there have been 24 Level 1 sites that have been displaced by barred owls, including those shown below:

Table 1. Summary of Level One sites that have been displaced by barred owls.

Site #	Level 2013	Level 2014	2013 Status	2014 Status	Site Name
3	ONE	ONE	N/C	F	McKay Dump East
4	ONE	ONE	PNN	PNF	Graham Gulch
5	ONE	ONE	F	U	Gills Mill
9	ONE	ONE	PU	PU	Church Camp
11	ONE	ONE	M	F	Doe Creek
13	ONE	ONE	PU	M	Lower Lake Creek
28	ONE	ONE	N/C	PU	Strongs Creek
30	ONE	ONE	PNN	PU	South Fork Strongs Creek
88	ONE	ONE	U	F	Greenlaw Creek
99	ONE	ONE	N/C	PU	Lower Chadd Creek
130	ONE	ONE	N/C	N/C	Corner Creek
147	ONE	ONE	U	N/C	Middle Bear Creek
154	ONE	ONE	F	F	Keller Ranch West
163	ONE	ONE	PU	PNF	Lower Road 3/Yager Creek
196	ONE	ONE	N/C	N/C	Nanning Creek
234	ONE	ONE	N/C	U	Elk River
254	ONE	ONE	M	PU	Blue Slide Creek
260	ONE	ONE	F	PNN	Little Salmon Creek
272	ONE	ONE	PU	N/C	Lower McCloud Creek
319	ONE	ONE	U	N/C	Substation South
320	ONE	ONE	F	U	East Br. Bridge Creek.
321	ONE	ONE	N/C	PU	South Runenburg Camp
332	ONE	ONE	N/C	N/C	Yager Creek MMCA
540	ONE	ONE	PU	PN2J	Grizzly Creek MMCA

The numbers over time of barred owl detections within 0.5 mile of spotted owl activity centers is shown in Figure 1. A linear trend line indicates an apparent increase over time.

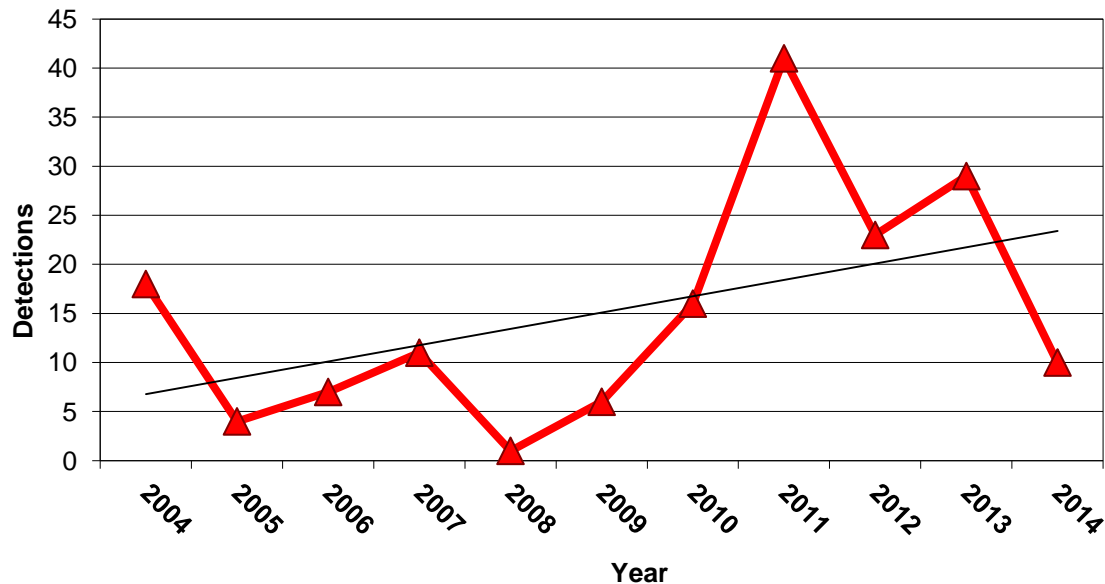


Figure 1. Barred owl detections within 0.5 mile of spotted owl activity sites.

There were two detections of barred owls on night and daytime surveys at Level Two and Level Three spotted owl sites including:

- 363 (Upper Elk Creek)
- 296 (Brown's Gulch)

In contrast, over the last several years there have also been five activity sites that have been re-occupied by spotted owls after the apparent disappearance of barred owls: 260 (Gas Wells), 99 (Chadd Creek), 296 (Brown's Gulch/Elk River), 287 (McCready Gulch/Freshwater), and 574 (Mt. Bemis-Grizzly Creek). See Map 2 for a map of all barred owl detections and nest sites located on HRC property.

An ongoing spotted owl and barred owl telemetry study involving the National Council for Air and Stream Improvement, Inc. (NCASI), the Bureau of Land Management (BLM), Redwood National and State Parks, Green Diamond Resource Company, and Mendocino Redwood Company, among others, is reaching a conclusion. The goals of the study included:

- Development of resource selection function models for spotted owl and barred owl habitat in relation to silvicultural applications.

- Promote integrated conservation or recovery of spotted owls across commercial and non-commercial forestlands.
- Clarify spotted owl and barred owl habitat relationships.
- Evaluate spotted owl responses to commercial thinning and partial harvesting in different parts of the owl's range.

Since spring 2010, four male and three female spotted owls, and one male and two female barred owls were captured, banded, and fitted with radio transmitters on HRC lands. Additional spotted and barred owls were captured, banded, and fitted with radio transmitters on adjacent BLM Headwaters Reserve lands.

Throughout the study area, beginning in 2012 and finishing in 2013, field crews conducted variable-radius plots to inventory habitat within home ranges of the radio-tagged owls. By comparing habitat use with availability the study hopes to identify specific influences on habitat selection behavior, such as vegetation structures, landforms, and tree and understory vegetation composition. This information will be useful in designing silvicultural applications that might improve the quality and overall quantity of spotted owl habitat (Adaptive Management Monitoring of Spotted Owls and Barred Owls, 2011 Progress Report, NCASI). Now that vegetative plot data collection is complete, the publication of results is expected in 2015.

WEST NILE VIRUS (WNV)

There is no new information on WNV to report for 2014; however, West Nile Virus (WNV) continues to have the potential to be a very serious threat to the northern spotted owl range-wide, and specifically to the Klamath region population (Courtney et al. 2004). It is unclear what effect WNV will have on population viability of spotted owls, and so the scientists involved in the recent 5-year status review of the species discussed two scenarios: 1) an unlikely range-wide reduction, and 2) a likely range-wide reduction in population viability (Courtney et al. 2004).

WNV has been documented in other species in Humboldt County. Mosquitoes, the vector organism for WNV, are very prevalent in the area. WNV has the potential to disrupt HCP objectives regardless of the covered activities of the HCP; however, at the present time no avian diseases appear to be significantly affecting spotted owl populations (USFWS 2008).

Blakesley *et al.* (2004) In USFWS (2010) offered two different scenarios for the possible outcomes of an infection by WNV of spotted owl populations:

- Spotted owls could tolerate severe, short-term population reductions caused by the virus because populations are widely distributed and number in the several thousands (see above also), and
- The virus will cause unsustainable mortality because of the frequency and/or magnitude of infection, thereby resulting in long-term population declines and extirpation from parts of the current range.

SUDDEN OAK DEATH (SOD)

The infection of hardwood species, especially tanbark oak (*Notholithocarpus densiflora* var. *densiflora*), by the invasive plant pathogen *Phytophthora ramorum* (Pythiaceae) and subsequent deterioration of spotted owl habitat has been raised as a threat (Courtney *et al.* 2004, Courtney *et al.* 2008, USFWS 2008). The pathogen is not a fungus or a bacterium, but a member of a unique group of organisms called Oomycetes (water molds). Oomycetes share some characteristics of fungi but are biologically different and more closely related to yeasts and brown algae.

The effects of this disease, known as Sudden Oak Death (SOD), could be especially harmful to spotted owl habitat in the Bear and Mattole watersheds on HRC lands where the hardwood component of habitat is most prevalent. However, the most recent evaluations of the extent of SOD in southern Humboldt County show only sporadic incidence, subject to continued monitoring (Courtney *et al.* 2008).

SOD survey and monitoring results from 2008 to 2014 on HRC lands indicate evidence (positive stream samples and known infected trees) of the pathogen in the Canoe Creek, Thompson Creek, and Elk Creek planning watersheds as well as positive stream samples from the Lower Larabee planning watershed (source of infection is likely off property to the east). All of these sites are located in the greater Upper Eel watershed. Additionally, there have been positive stream samples taken from the Grizzly Creek and Stevens Creek planning watersheds in the greater Van Duzen watershed, the location and extent of the infection there is still under investigation.

FOLLOW-UP VISITS

Timely follow-up visits were conducted to the locale of night contacts to determine the status and location of the owls contacted. All core spotted owl sites, and all activity sites within the sample quadrats (“quadrat sites”) were visited to determine occupancy, reproductive status, and reproductive success (if applicable). Other sites were visited to determine occupancy prior to the August designation of Level 1 sites.

A total of 849 daytime status and follow up visits were conducted in 2014, compared to 912 in 2013. The decrease in 2014 visits is likely due to more nesting attempts, and fewer overall monitoring visits (e.g. 1 - 2 visits to confirm nesting, and 1 to count fledglings).

Surveys and daytime status visits were conducted in order to collect data to determine the HCP management objectives (HCP §6.2.1) for the core sites, as discussed above in the Study Area and Methods section.

MANAGEMENT OBJECTIVES 1 AND 4

Management objectives 1 and 4 of the HCP require the maintenance of a minimum of 108 activity sites in the HCP area over the life of the permit, and at least 108 total activity sites in the sixteenth year of the permit (2014). As noted above, the HCP management objectives apply to the 108 core sites, consisting of 80 Level 1 sites, and 28 Level 2 sites. Therefore, with the 108 core activity sites, management objectives 1 and 4 have been met for 2014 (Table 1). In 2014 five activity centers met the criteria for removal from the active GIS layer according to the Decision Tree for Removal of Activity Centers (Appendix F).

Table 2. HCP northern spotted owl sites and occupancy status for 2014.

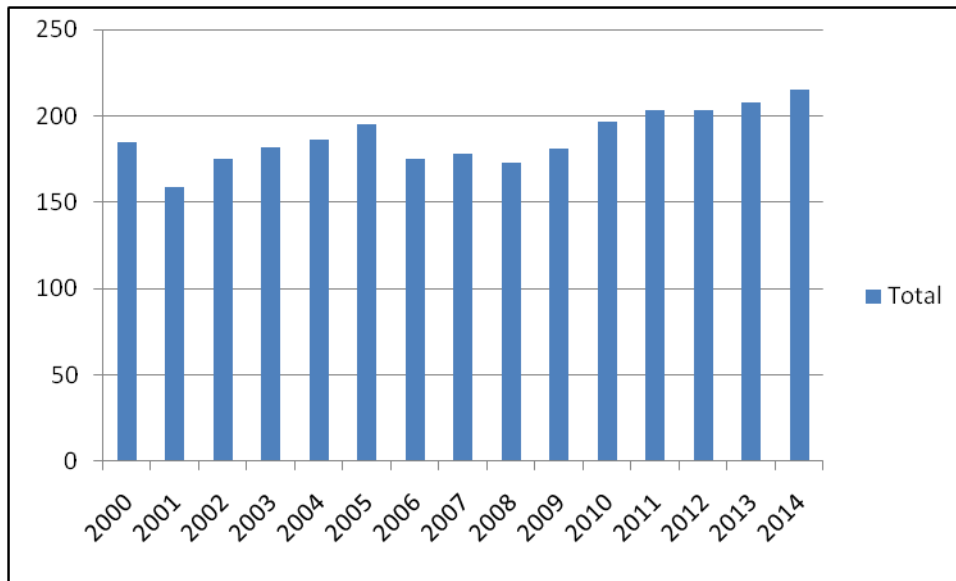
Parameter Description	All Sites	Core Sites	Quadrat Sites
A) HCP Occupied Sites	136	108	39
B) Occupied by Pairs	103	91	31
C) Occupied by Male	13	8	5
D) Occupied by Female	16	6	3
E) Occupied by Bird of unknown sex	4	3	0
F) Unoccupied (sites retained)	74	11	10
G) Unoccupied (sites removed)	5	0	4
H) Total HCP Property Sites	215	119	53
Occupancy rate by pairs* (HCP §6.2.1.2 target = 80%)	N/A	84%	79%

*Occupancy rate by pairs is determined by taking the number of sites occupied by pairs (B), and dividing it by the number of occupied sites: (A).

Core Sites include all Level 1 and Level 2 Sites.

The total number of HCP lands activity sites has remained relatively constant over the HCP years (Range 149-215, mean 187) (Figure 2). Only 149 activity sites were reported in the first year of HCP implementation (1999) when not all of the lands were surveyed. In 2000, several activity sites were included that were not occupied, were the result of take avoidance management prior to the HCP, and were subsequently removed from the inventory for 2001. It should be noted that not all Level 3 sites are surveyed for occupancy or non-occupancy every year, depending on which quadrats are being surveyed.

In 2014 there were 6 new activity centers located compared to 2013, when there were 3 new activity centers located by THP surveys, quadrat surveys or incidental contacts. In addition to these three new 2014 activity centers, three spotted owl territories (sites 118, 224, and 518), formerly off of the HRC ownership, were established or re-established on HRC property and were occupied by a pair of spotted owls, One territory (site 167) that was previously removed from our GIS layers was re-established (reoccupied) by a single NSO. It is possible that the gradual increasing trend in spotted owl activity centers from 2008 – 2014 is due to the movement of spotted owls as a result of increasing barred owl numbers, as well as the resulting barred owl influence on spotted owl activity centers.

Figure 2. Total NSO Activity Sites by HCP Year.

MANAGEMENT OBJECTIVE 2

Management objective 2 calls for maintenance of spotted owl pairs on an average of 80% of the core sites in the HCP area. During HCP development, 80% was selected as a target by taking the average number of occupied sites that contained pairs during the period of 1991 to 1998. As per HCP §6.2.3 # 6, the values pertaining to management objectives 2 and 3 are to be averaged over running five-year periods (see below). Site occupancy surveys verified pairs at 91 of the core 108 sites during the 2014 season (Table 2), giving an occupancy rate by pairs of 84% (0.843). The five-year running average for the pair occupancy rate is 82% (Table 3).

To address the agreed-upon reporting components of the quadrat sampling approach, we also calculated the pair occupancy rate for all sites monitored in the quadrats. The pair occupancy rate for the 39 (occupied) activity sites within quadrats was 79%. For the quadrat sites, the five-year running average for the pair occupancy rate is 66% (Tables 2 and 4).

MANAGEMENT OBJECTIVE 3

Management objective 3 requires the maintenance of a five-year running average reproductive rate of at least 0.61 fledged young per pair for the core sites (for those pairs monitored to determine reproductive output). For development of the target reproductive rate during HCP

development, 0.61 was selected as a target by taking the average number of young fledged per pair during the period of 1994 to 1998. However, only pairs that were determined to be nesting, or confirmed by protocol visits to be non-nesting, were used in the calculation. Spotted owl pairs with “status unknown” are now also used in the equation.

During the 2014 breeding season, 91 pairs (of the 108 core sites) were monitored for nesting activity and reproductive output. Nesting activity was verified for 33 of the 91 pairs. A total of 45 young were fledged, resulting in a reproductive rate of 0.49 for the year. This brought the five year running average reproductive rate for the sixteenth year of the HCP to 0.42 (Table 3), which does not meet the target for management objective 3. Since the rolling five-year average target for reproductive rate was not met in 2014, the adaptive management measures of HCP § 6.2.3, #6 apply, and a discussion between HRC, USFWS, CDFW, and if necessary, the NSOSRP, shall occur to review potential reasons why the objective is not being met, and to determine potential corrective measures to implement.

Table 3. Northern Spotted Owl Yearly Summary 2014.

Owl Status	1999	2000	2001	2002	2003	2004	2005	2006	2007	2008	2009	2010	2011	2012	2013	2014
Single Unk Sex	4	8	8	1	1	3	3	2	7	3	6	1	4	4	4	4
Single Male	29	31	14	4	11	6	9	7	11	9	10	7	9	9	6	7
Single Female	6	3	4	8	11	5	5	9	12	10	5	7	6	13	11	6
Pair Status																
Unknown	66	43	39	38	42	38	38	45	47	21	30	44	51	49	52	50
Non-nesting Pairs	11	14	12	18	20	13	7	7	14	6	3	5	8	6	17	8
Nesting Pair (failed)	0	5	8	2	9	5	5	3	2	9	2	1	9	6	3	7
Nesting Pair (PN)	2	0	1	5	1	0	1	3	0	6	3	6	0	1	1	0
Nesting Pair (PN1J)	10	10	22	16	7	16	21	16	6	5	13	21	7	9	4	7
Nesting Pair (PN2J)	21	46	47	22	6	22	19	16	9	38	36	16	14	11	10	19
Nesting Pair (PN3J)	0	0	1	0	0	0	0	0	0	1	0	0	0	0	0	0
Total Nesting Pairs	33	56	71	43	14	38	41	35	15	50	52	43	21	21	15	33
Total AC monitored (starting 2003 only 108 core sites are included in reproductive and pair occ calcs)	149	160	156	114	108	108	108	108	108	108	108	108	108	108	108	108
Total Owls	311	380	405	275	212	262	258	246	210	278	280	254	232	221	219	244
Pairs	110	118	130	101	85	94	91	90	78	86	87	93	89	82	87	91
Juveniles	52	102	119	60	19	60	59	48	24	84	85	53	35	31	24	45
Pair Occupancy Rate	73.8%	73.8%	83.3%	88.6%	78.7%	87.0%	84.3%	83.3%	72.2%	79.6%	80.6%	86.1%	82.4%	75.9%	80.6%	84.3%
Reproductive Rate	0.61	0.86	0.92	0.59	0.22	0.64	0.65	0.53	0.31	0.98	0.98	0.57	0.39	0.38	0.28	0.49
Rolling Average Occupancy Rate (5 Yr)	73.8%	73.8%	83.3%	88.6%	79.6%	82.3%	84.4%	84.4%	81.1%	81.3%	80.0%	80.4%	80.2%	80.9%	81.1%	81.9%
Rolling Average Reproductive Rate (5 Yr)	0.61	0.86	0.92	0.59	0.64	0.65	0.60	0.53	0.47	0.62	0.69	0.67	0.64	0.66	0.52	0.42

Table 4. Northern Spotted Owl Yearly Quadrat Summary 2014.

Owl Status	1999	2000	2001	2002	2003	2004	2005	2006	2007	2008	2009	2010	2011	2012	2013	2014
Single Unk Sex	1	2	2	1	2	3	0	0	2	2	6	0	2	1	3	0
Single Male	7	4	4	3	4	4	3	5	4	3	5	9	5	3	3	5
Single Female	1	0	2	1	3	1	0	3	1	3	1	2	4	7	7	3
Pair Status Unknown	12	12	8	6	13	13	7	15	11	3	9	4	22	9	18	13
Non-nesting Pairs	1	3	2	1	6	3	0	1	2	3	1	0	3	1	3	3
Nesting Pair (failed)	0	0	0	0	2	2	1	0	0	2	1	0	1	1	1	4
Nesting Pairs	12	10	18	10	7	12	9	4	2	17	19	9	3	5	0	11
Total Number of Activity Sites	34	31	36	22	37	38	20	28	22	33	42	24	40	27	35	39
Total Number of Owls	76	75	91	55	74	87	49	51	40	89	106	47	75	52	57	89
Total Number of Pairs	25	25	28	17	28	30	17	20	15	25	30	13	29	16	22	31
Total Number of Juveniles	17	19	27	16	9	19	12	3	3	31	34	10	6	9	0	19
Pair Occupancy Rate	73.5%	80.6%	77.8%	77.3%	75.7%	78.9%	85.0%	71.4%	68.2%	75.8%	71.4%	54.2%	72.5%	59.3%	62.9%	78.5%
Reproductive Rate	0.68	0.76	0.96	0.94	0.32	0.63	0.71	0.15	0.20	1.24	1.13	0.77	0.21	0.56	0.00	0.61
Rolling Occupancy Rate (5 YR)	73.5%	80.6%	77.8%	77.3%	77.0%	78.1%	78.9%	77.7%	75.8%	75.9%	74.4%	68.2%	68.4%	66.6%	64.0%	65.7%
Rolling Reproductive Rate (5YR)	0.68	0.76	0.96	0.94	0.73	0.72	0.71	0.55	0.40	0.59	0.69	0.70	0.71	0.78	0.53	0.43

In 2004 the Service clarified that the rolling averages, or running means, for pair occupancy and reproductive rates should be calculated by calculating a mean for each individual year, then calculating a mean of means, where $n = 5$ (Long 2004). This is the method used for Tables 3 and 4. We apologize for any errors in the running means in previous reports due to the use of grand means, or due to table formatting. Please note, however, that the rolling average reported for each report year has been correct in all reports.

For the quadrat sites, including all the Level 1-3 sites in the quadrat monitoring units, and using the number of pairs monitored for reproduction ($n = 31$), the 2014 reproductive rate was 0.61 (Table 4). The five-year running average for reproductive rate among quadrat sites is 0.43 (Table 4).

The NSOSRP recommended monitoring both the core sites and quadrat sites for occupancy and reproduction, and comparing the results to other study sites within the region. Because the HRC core sites and quadrat sites are managed in ways that are specific to the HCP, a comparison of trends in occupancy and reproduction with other study sites that are managed under different strategies (e.g., intensive timber harvest, moderate harvest, little to no harvest) can provide insight as to how the HCP is working and possibly what other factors may be affecting the spotted owl population (e.g., barred owls, climate). The available information indicates that trends for both the core and quadrat sites continue to track the results of other study areas over time (Figure 4).

Per HCP § 6.2.3, #3, management objectives may be modified if new information becomes available following review of the NSOSRP recommendations and approval by the USFWS and CDFW.

ACTIVITY SITE LEVELS OF PROTECTION

HCP §6.2.2 # 4, Conservation Measures, requires that owl activity sites on the covered lands be assigned to one of three protection levels. Accordingly, in September of 2014, 80 activity sites were designated as Level 1 sites. HRC requested an extension of the 1 June requirement for Level 1 selection due to the continuing difficulty of surveying all of the available sites by that date. The difficulty has increased in recent years due to the presence of barred owls in the study

area. USFWS and CDFW again granted HRC's request to extend the selection to 31 August to allow more time to visit the owl sites and provide greater flexibility in selection.

Selection of Level 1 sites was guided by the parameters described in HCP §6.2.2.4: 1) having the requisite habitat levels within a 0.7 and 1.3 mile radius of the activity center; and 2) having supported spotted owls in the previous year (2013), and also in the year selected (2014).

In addition, as part of the minor modifications approved in 2002, further language regarding Level 1 sites was added to management objective 2:

Maintain spotted owl pairs on an average of 80 percent (over a five-year period) of the minimum of 108 activity sites on the ownership (as shown in Table 7, for 2002 this minimum number shall be 115 activity sites, then 108 for 2003 and all subsequent years). At least 80 of these sites shall be Level One sites, and the balance shall be Level Two sites. PALCO intends to maintain these selected Level One and Level Two sites as the core sites for a period of from three to five years, or as long as possible, given other circumstances that may arise, and may preclude their maintenance as such. PALCO intends to select core sites that are historically stable, reproductively successful, and that have minimal disturbance, given that they occur in a managed landscape. (Emphasis added).

In keeping with the requirements of HCP §6.2.2 # 4 and # 5, if less than 500 acres of suitable habitat exists within 0.7 miles, or less than 1,336 acres of suitable habitat exists within 1.3 miles, the acreage of habitat cannot be reduced. HRC is currently protecting **93** Level One sites (83 Level One sites with an HRA and 10 replacement Level One sites, per the HRA language).

See the appendices for details and information on habitat acreage relative to Level 1 sites, THP activity, and quadrats (Appendices A-C).

Level 2 protection measures were afforded to 28 sites in 2014 (HCP §6.2.2.5). Level 2 sites receive 1,000-foot buffers during the breeding season. After the breeding season, or if a non-nesting status is determined, harvest may occur around a Level 2 activity site, as long as an 18-acre core area (the equivalent area of a 500-foot radius circle), with at least a 400-foot radius consisting of the best available habitat, is retained.

As with the Level 1 sites, as part of the minor modifications approved in 2002, further language regarding Level 2 sites was added to HCP §6.2.2 # 5, bullet # 4:

By 1 September of each year, PALCO shall designate the necessary number of Level Two sites, to make up the minimum number of activity sites as shown in Table 7.

Accordingly, in late August we designated 28 Level 2 sites, which combined with the 80 Level One sites already designated made up the 108 core sites for 2014.

Level 3 protection was afforded the balance of the activity sites on the HCP covered lands in 2014 (HCP §6.2.2 # 6). Level 3 sites are those sites not needed to meet management objectives 1 or 4 (108 minimum activity sites). As with Level 2 sites, Level 3 sites receive 1,000-foot buffers during the breeding season.

Language was also added (in 2002) to HCP §6.2.2 # 6 regarding Level 3 sites:

During the breeding season, for activity sites which have been determined to be occupied by a non-nesting pair or single NSO, 18 acres around the activity site shall be maintained as suitable nesting habitat, if present. The protected 18 acres may conform to natural landscape features, as designated by PALCO's wildlife biologist or a designee, and the buffer protecting the activity site must have at least a 400 foot radius. At PALCO's discretion harvesting may occur during the breeding season, in the area adjoining the 18-acre habitat retention area.

Thus, if a non-nesting status is determined, harvest may occur around a Level 3 activity site, so long as an 18-acre core area (the equivalent area of a 500-foot radius circle), with at least a 400-foot radius is retained. After the breeding season, harvest of the Level 3 sites may occur. If the activity site is harvested, any known nest trees are to be retained.

Habitat Conditions

The amount and type of spotted owl habitat as per HCP §6.2, Table 6 is reported annually (Table 5). Habitat information from the HRC Geographic Information System (GIS) is a “snapshot in time” of habitat conditions. For consistency and coordination with other forest inventory requirements the snapshot is currently taken on or around 1 January each year (Map 3). Thus, the information contained in this section of the report represents habitat conditions from approximately 1 January 2014 to 1 January 2015.

Ownership changes in and quantity of the HCP lands have occurred during the HCP period (i.e. since 1999). For example, certain lands have been sold to Federal or State entities or have been

“swapped” out of the HCP (following HCP agency review) for real estate sales and have been replaced with parcels similar in size and habitat value from our non-HCP ownership. However, the HRC ownership area has remained consistent since 2008.

As discussed in previous NSO annual reports, annual reports from 1999-2009 utilized forest stand information from 1999 and previous years to generate Wildlife Habitat Relationship (WHR) types and thus nesting, roosting and foraging (NRF) types based on HCP Table 6. Beginning in 2010 HRC embarked on a re-inventory project of the entire 209,000 acres of HRC lands. For the 2010 through 2012 habitat reports, those reports included the most current forest inventory information resulting from 2002-2006 cruise information, harvest updates for each year from 2000 forward, and cruise information available to date from the re-inventory work. This information was the most current and reliable “stand” information and best reflected conditions on the ground, although field evaluations were occasionally needed to verify stand types.

Also noted in previous year’s reports, HRC has revised procedures for assigning and tracking WHR and NRF types. Under the new procedures, WHR types are generated directly from tree data collected in HRC’s current forest resource inventory; whereas under PALCO, WHR was a static property-wide GIS layer that was usually, but not always, updated for harvests and had not been grown forward since its creation in 1999.

The re-inventory project is now complete for all HRC lands. HRC uses FORSEE software – developed by the California Growth and Yield Modeling cooperative of private and agency organizations – to process field inventory data. To generate WHR habitat types HRC uses output from FORSEE (modeled crown widths and WHR habitat species calls) together with methodology consistent with procedures used for PALCO’s 1999 HCP to develop WHR size classes. In future years these procedures will continue to be implemented on the current field inventory data set, which will be updated annually with new/replacement field plots, growth of trees in existing plot data via ForSee, and changes in timber types resulting from harvest and growth.

The current inventory information has been applied to both the property-wide analysis of habitat (Table 5, Figure 3) and the 0.7 and 1.3 mile habitat radii pertaining to the Level 1 activity sites

(Appendix C). A change in habitat trends corresponding with change in ownership, silviculture, and harvest level can be seen beginning around 2009. The steady, anticipated trend of reduction in nesting habitat, resulting in part due to the even-age silviculture preferred by the previous landowner, has leveled out in recent years. Similarly, the observed recent decline in the previously increasing number of acres of non-habitat is also consistent with the change to uneven-aged management, with a concurrent increase in foraging habitat post-harvest.

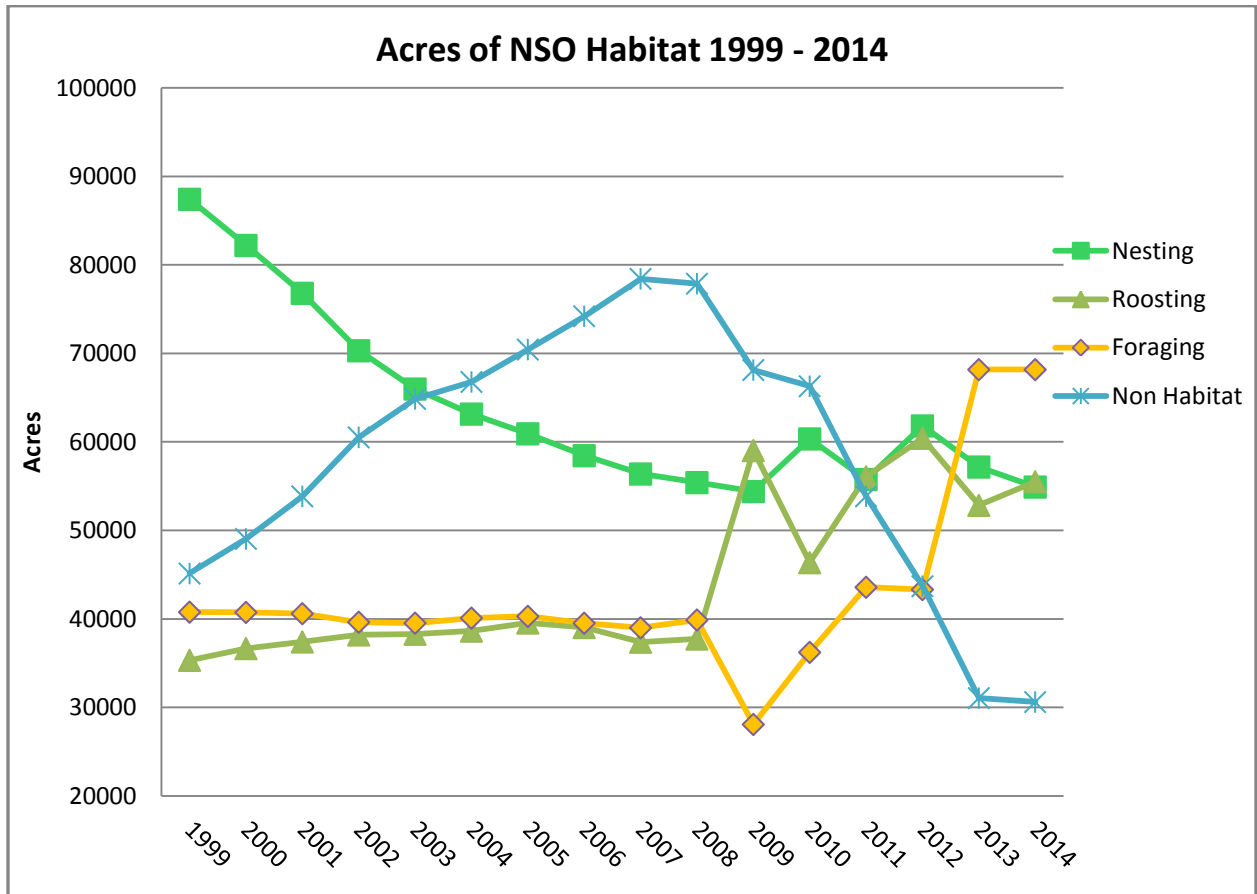
An ongoing concern that bears further investigation is whether or not the selection and group selection harvest will produce as much quality foraging habitat as the previous regime of even-age management.

Similar to previous annual reports, an analysis of patch sizes of suitable nesting habitat has been conducted on both the 18-acre and 80-acre polygon size, and included with this report (Table 5). The inventory changes discussed above also resulted in a change in the number of habitat patches. The acres of habitat in the Grizzly Creek Complex and Owl Creek MMCA are shown separately due to the unique nature of these parcels. No new inventory information has been applied to these parcels, although it is reasonable to assume that young stands in these reserves are growing and potentially increasing in habitat value for spotted owls.

Table 5. Acres of Habitat and Nesting Habitat Patches.

Year	Nesting (Acres)	Roosting (Acres)	Foraging (Acres)	Non Habitat (Acres)	18+ Acre Patches (Nesting)	80+ Acre Patches (Nesting)
1999	87,416	35,343	40,780	45,142	199	64
2000	82,205	36,670	40,753	49,053	204	68
2001	76,799	37,416	40,608	53,858	214	62
2002	70,309	38,209	39,642	60,521	226	72
2003	65,984	38,289	39,538	64,870	231	79
2004	63,153	38,641	40,103	66,784	238	83
2005	60,927	39,557	40,307	70,442	241	93
2006	58,453	39,043	39,533	74,204	244	92
2007	56,386	37,390	39,010	78,431	250	87
2008	55,412	37,747	39,890	77,886	251	88
2009	54,402	59,036	28,094	68,130	348	101
2010	60,348	46,372	36,236	66,300	332	105
2011	55,758	56,063	43,589	53,869	366	118
2012	61,817	60,424	43,330	43,708	311	102
2013	57,171	52,842	68,177	31,073	421	128
2014	54,909	55,514	68,177	30,625	424	125
Grizzly_Owl	1,700	207	322	343	4	4

Figure 3. Northern spotted owl habitat types over time.



To put habitat growth and harvest on HRC lands in the context of regional habitat conditions within the range of the northern spotted owl, we've previously reviewed the Final and Revised Final Recovery Plans for the Northern Spotted Owl (USFWS 2008, 2011b). The USFWS (2008) reported on the loss of spotted owl habitat range-wide related to timber harvest and natural events. Specifically related to timber harvest, they cautioned readers that harvest estimates can only be used to infer rates of forest removal, and may or may not translate directly to a rate of suitable habitat loss, since not all forest may equate to suitable spotted owl habitat.

Relative to the loss of suitable habitat due to **timber harvest**, USFWS (2008, 2011b) noted that there are only a few available reports on the topic, and summarized them as follows:

Cohen et al. (2002) cited in Bigley and Franklin (2004) reported "a steep decline in harvest rates between the late 1980's and early 1990's on State and Federal and private industrial forestlands." Habitat trends reported by the Service (USFWS 2004) indicated an overall decline of about 2% in the amount of suitable habitat on Federal lands as a result of management activities from 1994 to 2003. This rate is lower than the 2.5% per decade estimate of habitat loss resulting from management activities that was predicted in the Northwest Forest Plan (USDA and USDI 1994). Cohen et al. (2002) reported that from the early 1970's through the mid-1990's the harvest rates on private industrial forest lands were consistently about twice the average harvest rate on public lands.

Raphael (2006) estimated that since 1994, losses of NSO habitat from non-federal timber harvest have exceeded losses from Federal land, with a range-wide loss of approximately 8.0% (12% in Washington, 10.7% in Oregon, and 2.2% in California). Raphael (2006) also conducted an analysis looking only at regeneration harvest. This analysis estimates that nearly 3,000 acres of higher suitability spotted owl habitat was harvested on Federal reserved lands, and about 26,000 acres on non-reserved lands, between 1994 and 2004. This harvest represents less than 1% of the approximately 10 million acres of high suitability habitat thought to exist on both Federal and non-federal land in 1994.

Davis and Dugger (2011) estimated the amount of spotted owl nesting and roosting habitat lost due to harvest from the start of the Northwest Forest Plan (1994/1996) to 2006/2007 on non-federal lands in California to be about 90,200 acres (5.8% of total). However, Davis and Lint

(2005) found that forest fragmentation in California *decreased* from the 1930's and 1940's to the current time, possibly due to fire suppression.

Regarding habitat loss from **natural events** the USFWS (2008) reported that the loss of spotted owl habitat from natural events during the 10-year period from 1994 to 2003 was 224,041 acres, or about a 3% decline in available habitat range-wide (USFWS 2004). The majority of the habitat loss was due to wildfire (75%) with insects and disease making up the remainder (25%). Approximately 7,500 acres (0.4%) in California were estimated to have been lost due to fire, insects and disease from (1994/1996) to 2006/2007 (Davis and Dugger 2011).

More recently, for private industrial forest lands in California within the range of the northern spotted owl that do not operate under a HCP, there have been changes in take avoidance measures that require more habitat to be retained adjacent to activity sites (e.g. USFWS 2011).

BANDING PROGRAM

Banding of spotted owls as part of our overall program is a long-term research and management tool to help monitor the spotted owl population on the HRC ownership. The primary purposes of the banding and re-sighting project include: defining stable activity sites (site fidelity and displacement); detection of changes in occupancy over time (turnover and replacement); documentation of movements of sites and nest areas; and assessment of habitat quality based on site occupancy and reproductive history.

We again request that the USFWS consider this report, with associated Map 1, to satisfy their request for information concerning HRC's banding program as discussed in their letter of 14 January 2004.

In 2014, there were 150 total band resights (Appendix H). Of the 108 core sites, 48 pairs were positively identified at occupied sites. Some interesting resight information includes: a male was banded in 2011 and had not been resighted since the banding occurred. In 2014, he was resighted at newly reoccupied site 38, downstream on Yager Creek two miles from the original activity center/banding location. Interestingly, the historic site 41 banded male (banded in 2001) was subsequently resighted back at site 41 in 2014.

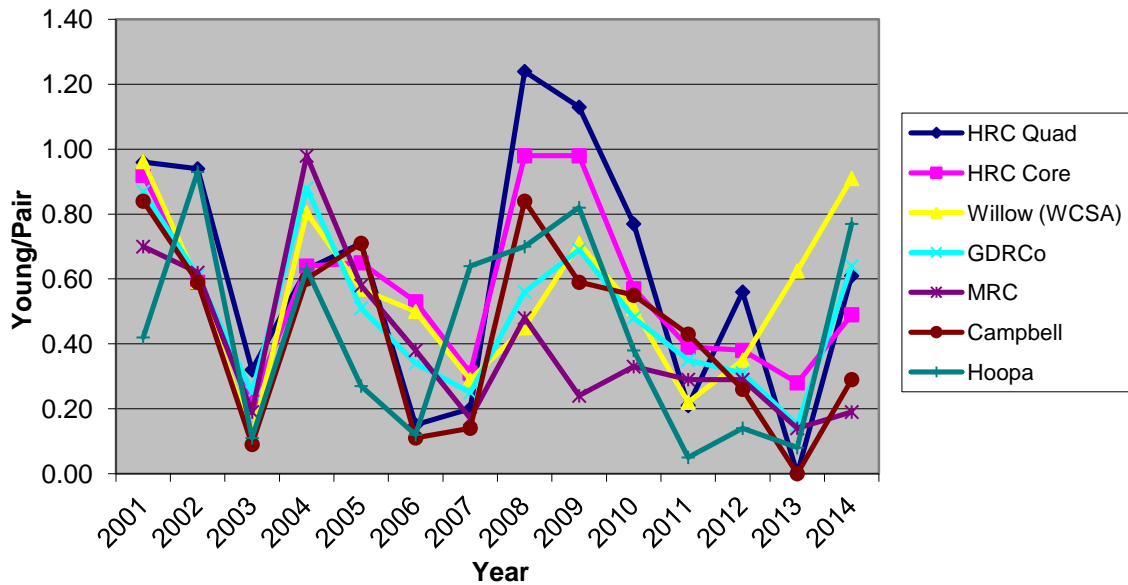
Since 2003 a total of 327 spotted owls have been banded, consisting of 279 adults and 48 juveniles. Data from HRC banded northern spotted owls with at least 7 years of data (131 banded adults from 60 sites during the years 2000-2006) showed that spotted owl survival remained stable over that time period (Bigger et al. 2008). Continuing to collect and analyze banding and re-sight information is a key component of this program.

REGIONAL TRENDS

Following both the 2003 and 2007 survey seasons, PALCO, the NSOSRP, and the Agencies convened and discussed the HCP management objectives, potential reasons why they may not be met, and potential corrective measures to implement if necessary. On both occasions the NSOSRP recommended that HCP results be compared to those of other study areas in the region. Figure 4 below illustrates the regional northern spotted owl reproductive rates for several study areas of Northern California (Douglas, Early, Fullerton, Higley, Carlson, pers. comm. 2014).

As demonstrated in the figure, results for both the core and quadrat sites on HRC track the results of other study areas over the HCP period, with the exception of the Willow Creek Study Area (WCSA) for which positive or negative changes sometimes seem to “lag” a year or two behind other study areas. As with other studies in the region (Anthony, et al 2004, Franklin 1997, Franklin 2000) data indicates that reproductive results are strongly correlated to regional trends in climate (Franklin, et al. 2000, HRC, unpublished data). Glenn (2009) found that climate accounted for 78-84% of the temporal variation in population change in the Oregon coast range, and climate and barred owls together accounted for approximately 100% of the changes in spotted owl survival. Thus, there are good and bad reproductive years that appear to track precipitation early in the breeding season, and more recently, the barred owl influence on spotted owl reproduction.

All five cooperators reported a relatively modest increase in reproductive results for 2014, which normally is consistent with the lower than average rainfall events of late spring. Green Diamond (2014) has reported a sharp increase in NSO sites within their barred owl removal experiment area in the Lower Mad River, providing what appears to be important information relative to spotted/barred owl interaction.

Figure 4. Comparison of Regional Reproductive Rates 1999-2014.

RECOMMENDATIONS

SURVEYS

We recommend changes in survey strategies for new operations, if warranted, following review of results of the occupancy and probability of detection analysis. Current plans also call for continued surveys in 2015 with the quadrat sampling technique. In 2015, quadrats 4, 6, 10, and 17 are scheduled for monitoring (Van Duzen North, Bear River, Shively/Larabee, and Kneeland respectively). These quadrats were initially surveyed in 2005 and again in 2010 and it will be interesting to compare them with the 2015 surveys, distribution of activity centers, reproduction, and location and activity level of barred owls. Timely follow-up visits (i.e., within 72 hours, weather permitting) will be conducted to all nighttime contacts. Following the season, the data gathered will be used to evaluate the efficacy of the HCP management objectives and conservation measures for the core sites, and also for the quadrat sites.

BANDING

In 2015 we intend to continue to work with the Service, CDFW, and adjacent study areas to make our banding efforts as efficient and effective as possible, keeping in mind the goals of the effort. The overall intent is to utilize the program as a complete mark and re-sight effort and to develop programs similar to other study sites in the region. As always, during any of our capture and banding efforts, we will continue to be cautious in our efforts, keeping the care and safety of the birds first in mind.

BARRED OWLS

HRC continues to have significant concerns that the barred owl invasion will continue to cause declines in site occupancy and reproduction of our spotted owl population. In 2014, we continued to utilize barred owl calls (5 minutes of recorded barred owl calls at the end of the 10 minute spotted owl calls) on a portion of our quadrat monitoring stations. We intend to revisit the use of barred owl calls in light of any new information that becomes available. We will attempt to utilize any new techniques to monitor barred owl and spotted owls across the ownership. In addition, HRC continues to be interested in the results of barred owl removal projects as recommended by the Service (USFWS 2008), and will continue to monitor the results of ongoing studies as they are available.

SCIENTIFIC PANEL/MANAGEMENT OBJECTIVES

The HCP Northern Spotted Owl Conservation Plan §6.2.2, Conservation Measures, Item 1 refers to the NSO Scientific Review Panel (NSOSRP) and discusses the establishment and roles of the NSOSRP. The NSOSRP generally met every year for the first 5-6 years of implementation and provided review of monitoring results and recommendations for future monitoring and analyses.

Not meeting the HCP management objective for reproductive rate triggers the adaptive management measures of HCP § 6.2.3, #6, and a discussion between HRC, USFWS, CDFW, and the Panel shall occur to review potential reasons why the objective is not being met, and potential corrective measures to implement.

As stated earlier, in 2013 and 2014 the rolling five-year average reproductive rate for monitored pairs of northern spotted owls in our study area has not met the HCP objective of 0.61 fledglings

per pair. The rolling average reproductive rates for 2013 and 2014 were 0.52 and 0.42 respectively, and follow a period of five consecutive years (2008-2012) when the rolling average reproductive rate did meet the management objective.

During the 16 years of HCP implementation (1999-2014) the management objective for the rolling average reproductive rate was not met during the 2006 and 2007 seasons (0.53 and 0.47 respectively). And, similar to the 2013-2014 situation, followed 7 consecutive years when the rolling average was greater than 0.61, or not significantly different from 0.61 (0.59, 2002).

Following the 2007 season the HRC, USFWS, CDFW, and Panel (Alan Franklin, Barry Noon, and Steven Courtney) convened via conference call to discuss the reproductive results.

Consideration was given to whether there was a clear cause-and-effect relationship between management activities, or if results were within the range of annual variation.

At that time the forestlands were still owned by the Pacific Lumber Company and managed using primarily even-age (clear cut) management at a rate of harvest of approximately 150 mmbf/year, including harvest of old growth trees. The barred owl invasion of north coastal California had not yet been fully realized as a potential reason for a reduced reproductive rate.

Although there were no clear reasons for a reduced reproductive rate, for discussion on the conference call a Habitat Retention Area (HRA) strategy was proposed as a potential corrective measure, with the objective of retaining a polygon of the best habitat surrounding the most stable and reproductive spotted owl nest sites, rather than using the 500' and 1,000' radii as the standard habitat retention model. The USFWS, CDFW, Panel and HRC agreed on the strategy, and it was implemented beginning in 2009 (CDFG and USFWS 2009).

In 2008 the Humboldt Redwood Company (HRC) was formed from the Pacific Lumber Company bankruptcy proceedings and significant management changes followed, including in harvest techniques, rate of harvest, and retention of old growth components. Management of the Humboldt County forestlands was changed to reflect that of HRC's sister company, Mendocino Redwood Company (MRC), including the use of uneven-age (selection, group selection) harvest, a reduction in harvest level to an average of approximately 55 mmbf/year (over a ten-year period), and retention of all old growth trees meeting the company policy.

In 2008 and 2009 the annual reproductive rate was relatively high (0.98 both years), but has since declined from 2010-2014, and as the high rates have fallen out of the rolling average calculation and been replaced by lower rates, the rolling average has also declined to the point where it is below the management objective. So, although management on the forestlands has changed in a manner that results in harvest of less spotted owl habitat (i.e. Figure 3), and retains more late successional habitat components on the landscape, the reproductive rate is in a current decline nonetheless.

As with other study sites in the region, HRC has tracked the presence of barred owls in our study area, and although there was a decrease in 2014, there has been an overall significant increase over time in barred owl detections within 0.5-mile of spotted owl activity sites (Figure 1). Studies previously referenced have indicated that barred owl presence within spotted owl territories can disrupt spotted owl occupancy and reproduction.

During the HCP's early years the Panel recommended comparing the HRC HCP results to other study sites within the region. Because the HRC owl sites are managed in ways that are specific to the HCP, a comparison of trends in occupancy and reproduction with other study sites that are managed under different strategies (e.g., intensive timber harvest, moderate harvest, little to no harvest) can provide insight as to how the HCP is working and possibly what other factors may be affecting the spotted owl population (e.g., barred owls, climate). The available information indicates that trends for both the core and quadrat sites continue to track the results of other study areas over time (Figure 4).

All cooperators reported an increase in breeding activity and reproductive rate in 2014, but there appears to be a declining trend unlike the "every other" year pattern in spotted owl reproduction that had been historically observed. It should also be noted that increases in spotted owl occupancy and reproduction on the Hoopa and Green Diamond study areas have been at least in part attributed to lethal barred owl removal from spotted owl territories.

In light of the fact that management of the HRC forestlands has had a reduced impact on habitat since the change in ownership in 2008, the evidence from other study areas within the range of the northern spotted owl that barred owls can have a very significant impact on occupancy and reproduction of spotted owls, and the fact that HRC activity centers have been colonized by

barred owls, it seems to be clear that barred owls are now negatively impacting spotted owl occupancy and reproduction on HRC lands and are the primary cause of failure to meet HCP management objectives.

Another potential factor in declining spotted owl reproduction on HRC lands is a decline in prey base (e.g. dusky-footed woodrats) as a result of the change in silvicultural practice from even to uneven-age, in turn resulting in a decrease in brushy clearings favored by woodrats. Future prey base studies should focus on woodrat densities in selection, group selection, and variable retention harvest areas compared to clear cut harvest.

We anticipate that these topics would be the primary focus of any future discussion of HCP management objectives and potential corrective measures, pursuant to HCP § 6.2.3, #6.

REFERENCES

- Anthony, R.G., Eric D. Forsman, Alan B. Franklin, David R. Anderson, Kenneth P. Burnham, Gary C. White, Carl J. Schwarz, Jim Nichols, Jim E. Hines, Gail S. Olson, Steven H. Ackers, Steve Andrews, Brian L. Biswell, Peter C. Carlson, Lowell V. Diller, Katie M. Dugger, Katherine E. Fehring, Tracy L. Fleming, Richard P. Gerhardt, Scott A. Gremel, R.J. Gutierrez, Patti J. Happe, Dale R. Herter, J. Mark Higley, Rob. B. Horn, Larry L. Irwin, Peter J. Loschl, Janice A. Reid, and Stan G. Sovern. 2004. Status and Trends in Demography of Northern Spotted Owls, 1985-2003. Report for the Interagency Regional Monitoring Program. 179 pp.
- Bigger, D., K. Sullivan, and S. Chinnici. 2008. Modeling reproductive performance of northern spotted owls relative to climate and forest habitat in coastal California. Presentation at the Annual Meeting of The Wildlife Society, Miami, Florida.
- Bigley, R. and J. Franklin. 2004. Habitat trends. Chapter 6 in S. Courtney (editor), Scientific evaluation of the status of the northern spotted owl. Sustainable Ecosystems Institute, Portland, Oregon.
- Blakesley, J.A., W. LaHaye, J.M.M. Marzluff, B.R. Noon, and S. Courtney. 2004. Demography. Chapter 8 in S. Courtney, editor. Scientific evaluation of the status of the northern spotted owl. Sustainable Ecosystems Institute, Portland, Oregon.
- California Department of Fish and Game. 2009. Concurrence on Habitat Retention Area Strategy for Level One Northern Spotted Owl Activity Centers, Humboldt Redwood Company Habitat Conservation Plan Section 6.2.2.4 Bullet # 6. Letter from CDFG to Humboldt Redwood Company, March 3, 2009.
- Carlson, P. 2014. Personal communication between Peter Carlson, Research Associate, Colorado State University, and Brad Mauney, Lead Wildlife Biologist at HRC.
- Cohen, W.B., T.A. Spies, R.J. Alig, D.R. Oetter, T.K. Maiersperger, and M. Fiorella. 2002. Characterizing 23 years (1972-1995) of stand replacement disturbance in western Oregon forests with Landsat Imagery. *Ecosystems* 5:122-137.
- Courtney, Steven P., Jennifer A. Blakesley, Richard E. Bigley, Martin L. Cody, Jack P. Dumbacher, Robert C. Fleischer, Alan B. Franklin, Jerry F. Franklin, Rocky J. Gutierrez, John M. Marzluff, and Lisa Sztukowski. 2004. Scientific Evaluation of the Status of the Northern Spotted Owl. Report to the U.S. Fish and Wildlife Service in Support of the 5-Year Status Review Process.
- Courtney, S.P., A.B. Carey, M.L. Cody, K. Engel, K.E. Fehring, J.F. Franklin, M.R. Fuller, R.J. Gutierrez, J.F. Lehmkuhl, M.A. Hemstrom, P.F. Hessburg, S.L. Stephens, L.A. Sztukowski, L. Young. 2008. Scientific Review of the Draft Northern Spotted Owl Recovery Plan and Reviewer Comments. Sustainable Ecosystems Institute. Portland, OR. 159 pp.
- Davis, R.J., and K.M. Dugger. 2011. Northwest forest plan-the first 15 years (1994-2008): status and trends of Northern Spotted Owl Populations and Habitat. General Technical Report PNW- GTR-850. Pacific Northwest Research Station, U.S. Department of Agriculture, Forest Service, Portland, Oregon.
- Davis, R., and J. Lint. 2005. Habitat status and trends. Pages 21-82 in J. Lint, technical coordinator. Northwest Forest Plan—the first 10 years (1994-2003): status and trends of northern spotted owl populations and habitat. General Technical Report PNW-GTR-648, Pacific Northwest Research Station, U.S. Department of Agriculture, Forest Service, Portland, Oregon.
- Douglas, R. 2014. Personal communication between Robert Douglas, Forest Sciences Manager at Mendocino Redwood Company (MRC) and Brad Mauney, Lead Wildlife Biologist at HRC.

- Early, D. 2014. Personal communication between Desiree Early, Wildlife Biologist at Green Diamond Resource Company and Brad Mauney, Lead Wildlife Biologist at HRC.
- Franklin, A. 1997. Factors Affecting Temporal and Spatial Variation in Northern Spotted Owl Populations in Northwest California. PhD. Dissertation, Colorado State University, Fort Collins, Colorado. 185 pp.
- Franklin, A.B., D.R. Anderson, R.J. Gutierrez, and K.P. Burnham. 2000. Climate, habitat quality, and fitness in northern spotted owl populations in northwestern California. *Ecological Monographs* 70:539-590.
- Fullerton, S. 2013. Personal communication between Scott Fullerton, Wildlife Biologist for Campbell Timberland Management, and Brad Mauney, Lead Wildlife Biologist at HRC.
- Glenn, E.M. 2009. Local weather, regional climate, and population dynamics of northern spotted owls in Washington and Oregon. Dissertation, Oregon State University, Corvallis.
- Green Diamond Resource Company. 2014. HCP Annual Report. Available on the website greendiamond.com.
- Higley, J.M. 2014. Personal communication between J. Mark Higley, Senior Biologist for Hoopa Tribal Forestry, and Brad Mauney, Lead Wildlife Biologist at HRC.
- Long, M. 2004. Letter from Michael Long, U.S. Fish and Wildlife Service to J. Barrett, Scotia Pacific Lumber LLC. April, 21, 2004. Review of the 2003 Northern Spotted Owl Annual Report of The Pacific Lumber Company (AFWO File Number 1-14-TA-2004-2190). 2 pp.
- National Council for Air and Stream Improvement (NCASI). 2011. Adaptive Management Monitoring of Spotted Owls and Barred Owls, 2011 Progress Report. Unpublished report on file, www.ncasi.org. 112 pp.
- Raphael, M.G. 2006. Conservation of listed species: the northern spotted owl and marbled murrelet. Chapter 7 in R.W. Haynes, B.T. Borman, D.C. Lee, and J.R. Martin (technical editors), Northwest Forest Plan – the first 10 years (1994-2003): synthesis of monitoring, and research results. Gen. Tech. Rep. PNW-GTR. USDA Forest Service, Pacific Northwest Research Station, Portland, Oregon.
- The Pacific Lumber Company. 1999. Habitat Conservation Plan for the Properties of The Pacific Lumber Company, Scotia Pacific Holding Co., and Salmon Creek Corporation.
- U.S. Department of Agriculture and U.S. Department of the Interior. 1994. Record of decision for amendments to Forest Service and Bureau of Land Management planning documents within the range of the northern spotted owl; standards and guidelines for management of habitat for late-successional and old growth forest related species within the range of the northern spotted owl USDA Forest Service, Portland, Oregon, and USDI Bureau of Land Management, Portland, Oregon.
- U.S. Department of the Interior, Fish and Wildlife Service. 2004. Estimate Trends in Suitable Habitat for the Northern Spotted Owl (*Strix occidentalis caurina*) on Federal Lands from 1994 to 2003. For Use By: Sustainable Ecosystems Institute for the Northern Spotted Owl 5-Year Review. U.S.D.I. Fish and Wildlife Service.
- U.S. Fish and Wildlife Service. 1992. Protocol for surveying proposed management activities that may impact northern spotted owls. March 7, 1991 (Revised March 17, 1992).
- U.S. Fish and Wildlife Service and National Marine Fisheries Service. 1999. Biological and Conference Opinions Regarding Issuance of an Incidental Take Permit to the Pacific Lumber Company, Scotia Pacific Company LLC, and Salmon Creek Corporation. 469 pp. and Appendices.

- U.S. Fish and Wildlife Service. 2008. Final Recovery Plan for the Northern Spotted Owl, *Strix occidentalis caurina*. U.S. Fish and Wildlife Service, Portland, Oregon. xii + 142 pp.
- U.S. Fish and Wildlife Service. 2009. Response to Proposal for a Habitat Retention Areas Strategy for Level 1 Northern Spotted Owls. Letter from USFWS to Humboldt Redwood Company, February 25, 2009.
- U.S. Fish and Wildlife Service. 2010. Draft revised recovery plan for the northern spotted owl, *Strix occidentalis caurina*. U.S. Fish and Wildlife Service, Portland, Oregon. xii + 163 pp.
- U.S. Fish and Wildlife Service. 2011a. Revised Survey Protocol for the Northern Spotted Owl, (*Strix occidentalis caurina*). U.S. Fish and Wildlife Service, Portland, Oregon.
- U.S. Fish and Wildlife Service. 2011b. Revised Recovery Plan for the Northern Spotted Owl, (*Strix occidentalis caurina*). U.S. Fish and Wildlife Service, Portland, Oregon. Xvi + 258 pp.
- U.S. Fish and Wildlife Service. 2011. 2011 Revision of the Northern Spotted Owl Take Avoidance Analysis and Guidance for California Coast Forest District. U.S. Fish and Wildlife Service, Arcata, CA. 12 pp.